



W
WATKINS

RK
REIMERS KAUFMAN
CONCRETE PRODUCTS

CP
CHRISTENSEN
CONCRETE PRODUCTS

KCB
KEARNEY
CRETE & BLOCK

Masonry Flipbook

Nebraska Built

NEBCO, Inc. has been part of Nebraska and the region's history for over a century. NEBCO's operations span the state of Nebraska and supply the construction industry with materials needed to construct buildings, streets and highways.

As part of a network of block manufactures owned by NEBCO, Watkins Concrete Block Company, Reimers Kaufman Concrete Products Company, Christensen Concrete Products, and Kearney Crete & Block Company strive to produce top-quality product, offer unparalleled customer service and evolve with changing times.

Watkins, located in Omaha, NE, was incorporated in 1946 when they began manufacturing a handful of concrete block products.

Reimers Kaufman, of Lincoln, has been well known in Nebraska for production of concrete construction blocks since 1906.

Christensen Concrete Products was founded in 1947 when Grand Island was preparing to pave its city streets. In 1948 Christensen began production of concrete block.

Kearney Crete & Block began in 1946 supplying ready mixed concrete as well as manufactured concrete masonry units.

Today, all four companies manufacture over 400 items including standard concrete block, segmental retaining wall components and architectural concrete block. 98% of the aggregates used to make these products are sourced within Nebraska. Other product lines include concrete and clay pavers, clay face brick, manufactured stone veneer, natural stone, caulking, sealants and a variety of accessory products for both the residential and commercial construction and landscaping markets.

The teams at Watkins, Reimers Kaufman, Kearney Crete & Block, and Christensen Concrete take great pride in producing the highest quality products, sourced right here in our own backyard. And for these reasons, we are Nebraska Built.







Standard Block Colors



Gray (Base Color)

Standard



Gray (Base Color)

Rockfaced



Chocolate

Standard



Chocolate

Rockfaced



Goldenrod

Standard



Goldenrod

Rockfaced



Medium Brown

Standard



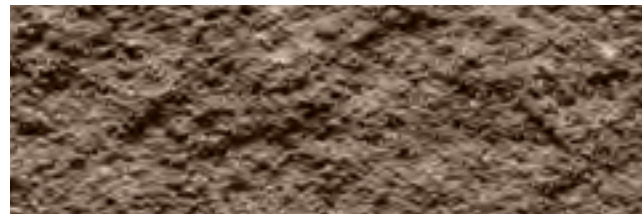
Medium Brown

Rockfaced



Mocha

Standard



Mocha

Rockfaced



Sahara

Standard



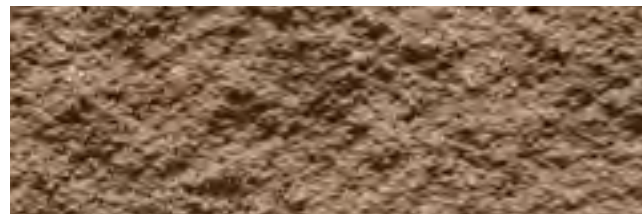
Sahara

Rockfaced



Sand

Standard



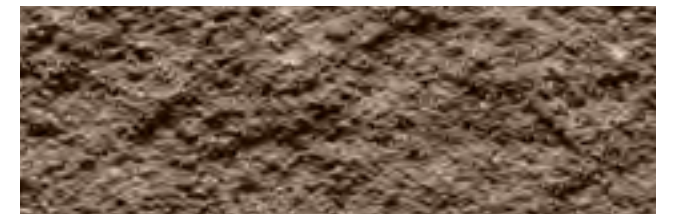
Sand

Rockfaced



Terracotta

Standard



Terracotta

Rockfaced



Tile Red

Standard



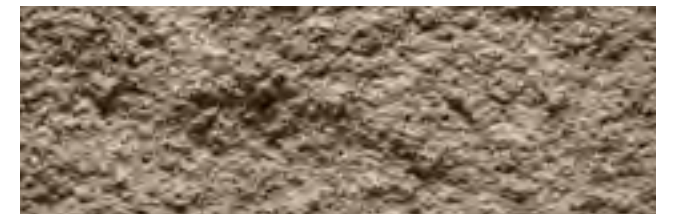
Tile Red

Rockfaced



Wheat

Standard



Wheat

Rockfaced



Premium Block Colors



Biscotti

Standard



Biscotti

Rockfaced



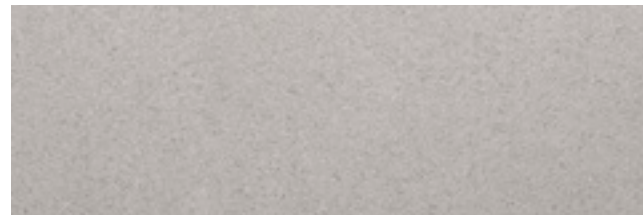
Champagne

Standard



Champagne

Rockfaced



Cotton

Standard



Cotton

Rockfaced



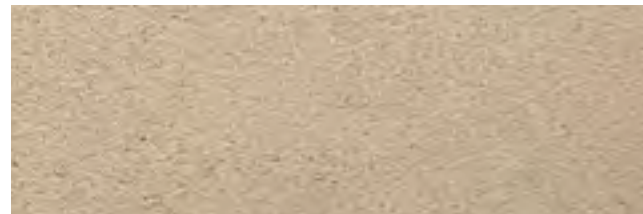
Cream

Rockfaced



Cream

Rockfaced



Linen

Standard



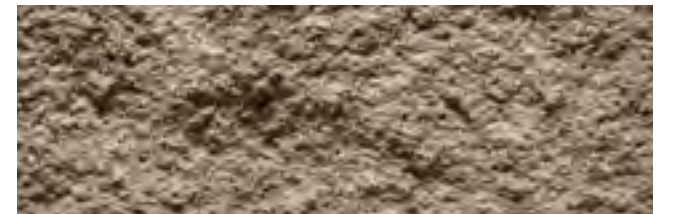
Linen

Rockfaced



Pewter

Standard



Pewter

Rockfaced



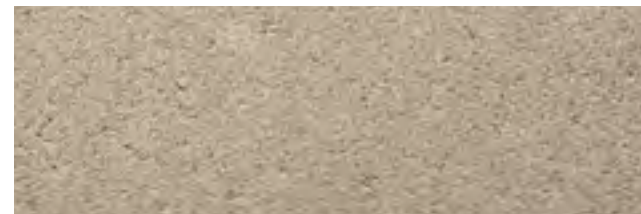
Smoke

Standard



Smoke

Rockfaced



Wool

Standard



Wool

Rockfaced

Ultra Premium Block Colors



Glacier

Rockfaced



Marble

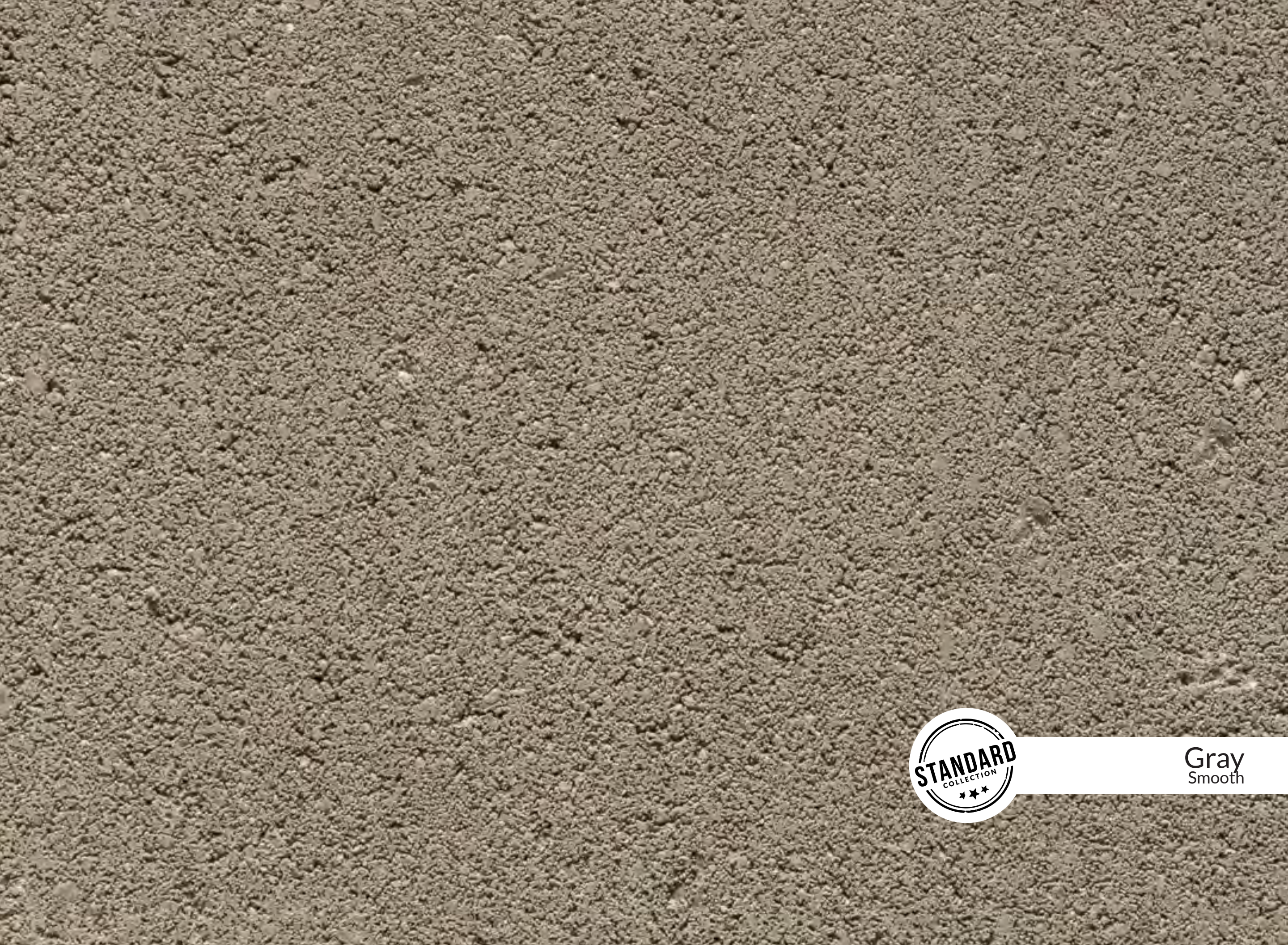
Rockfaced



Putty

Rockfaced





Gray
Smooth



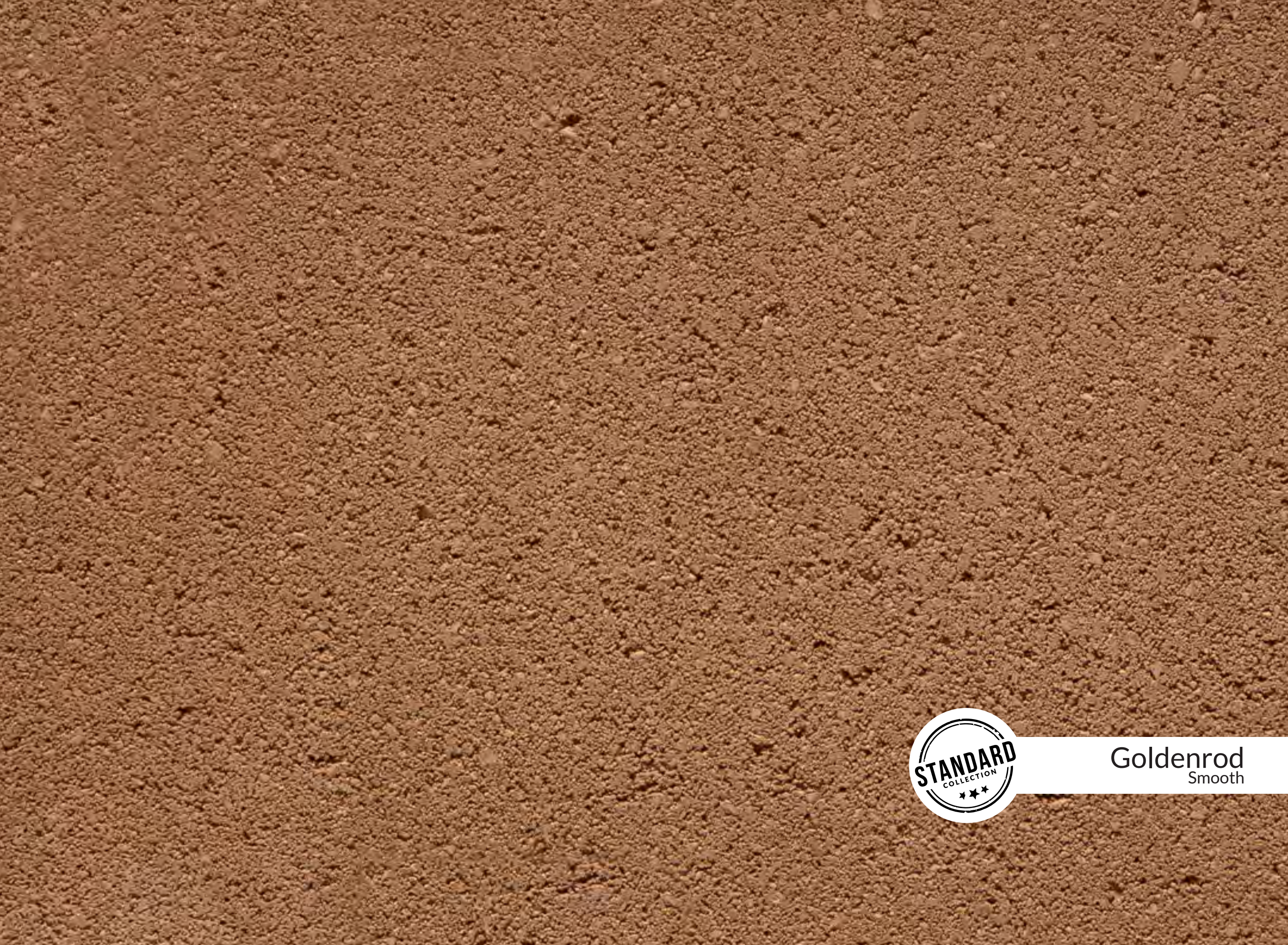
Gray
Rockface



Chocolate
Smooth



Chocolate
Rockface



Goldenrod
Smooth



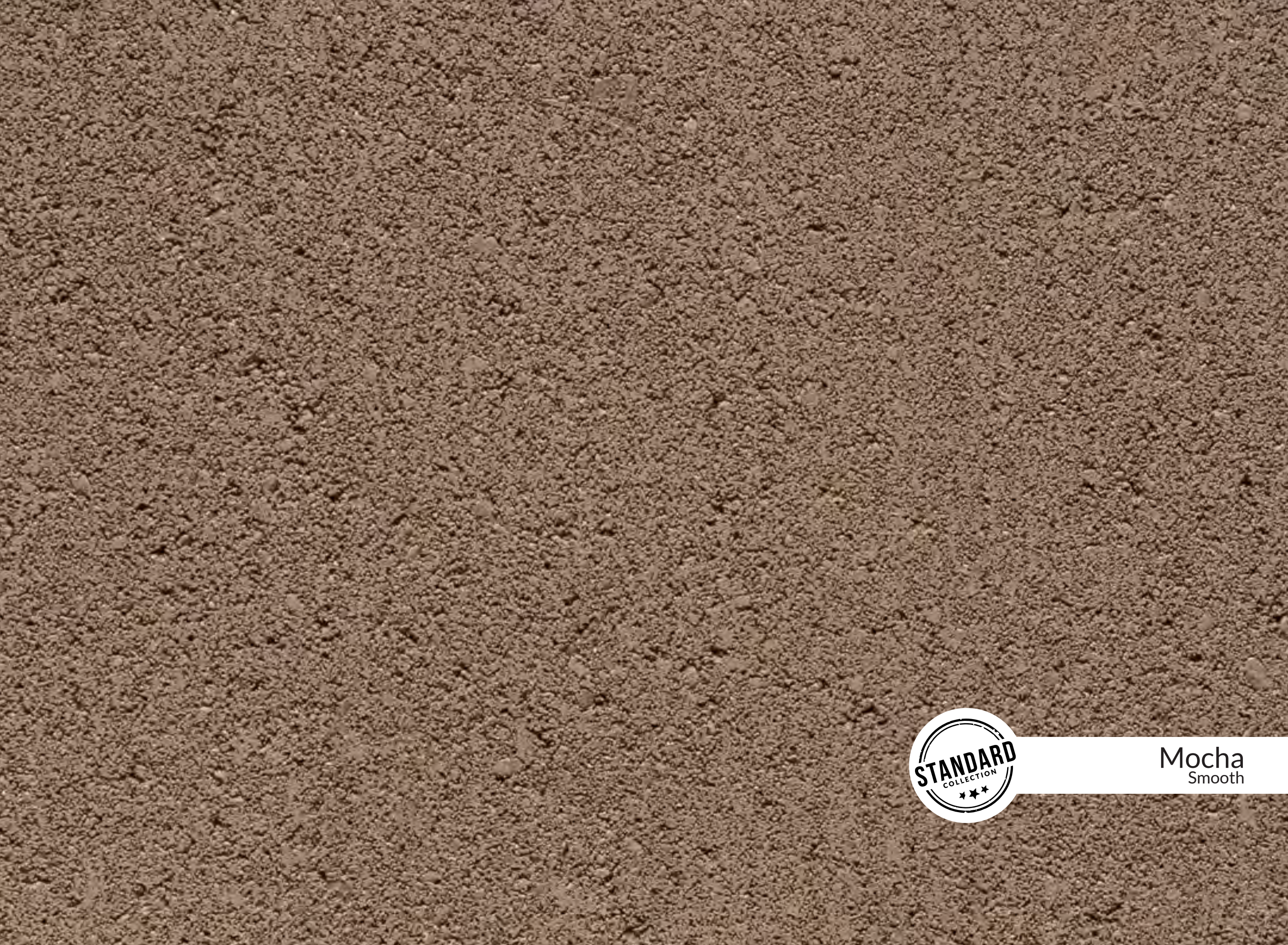
Goldenrod
Rockface



Medium Brown
Smooth



Medium Brown
Rockface



Mocha
Smooth



Mocha
Rockface



Sahara
Smooth



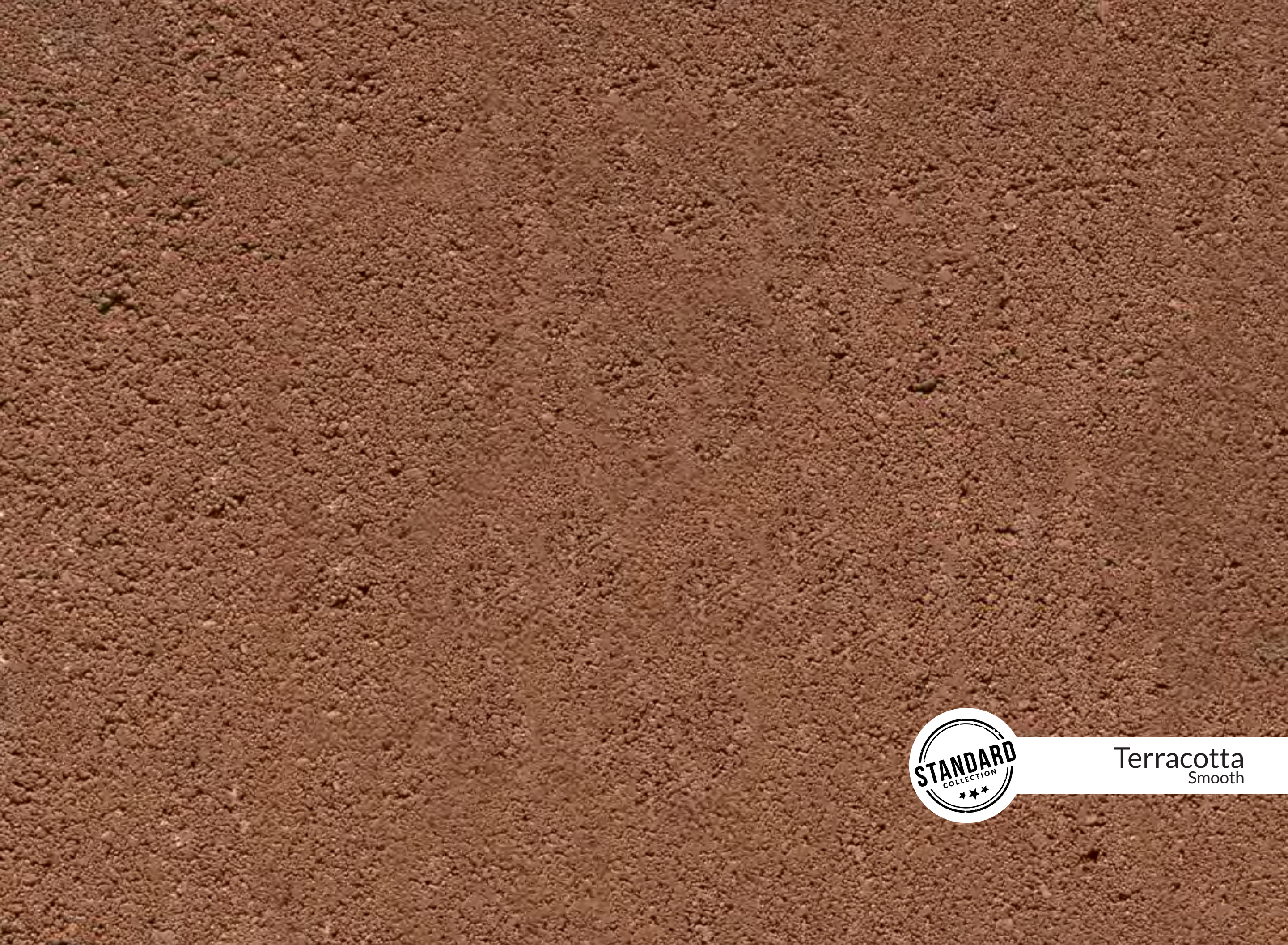
Sahara
Rockface



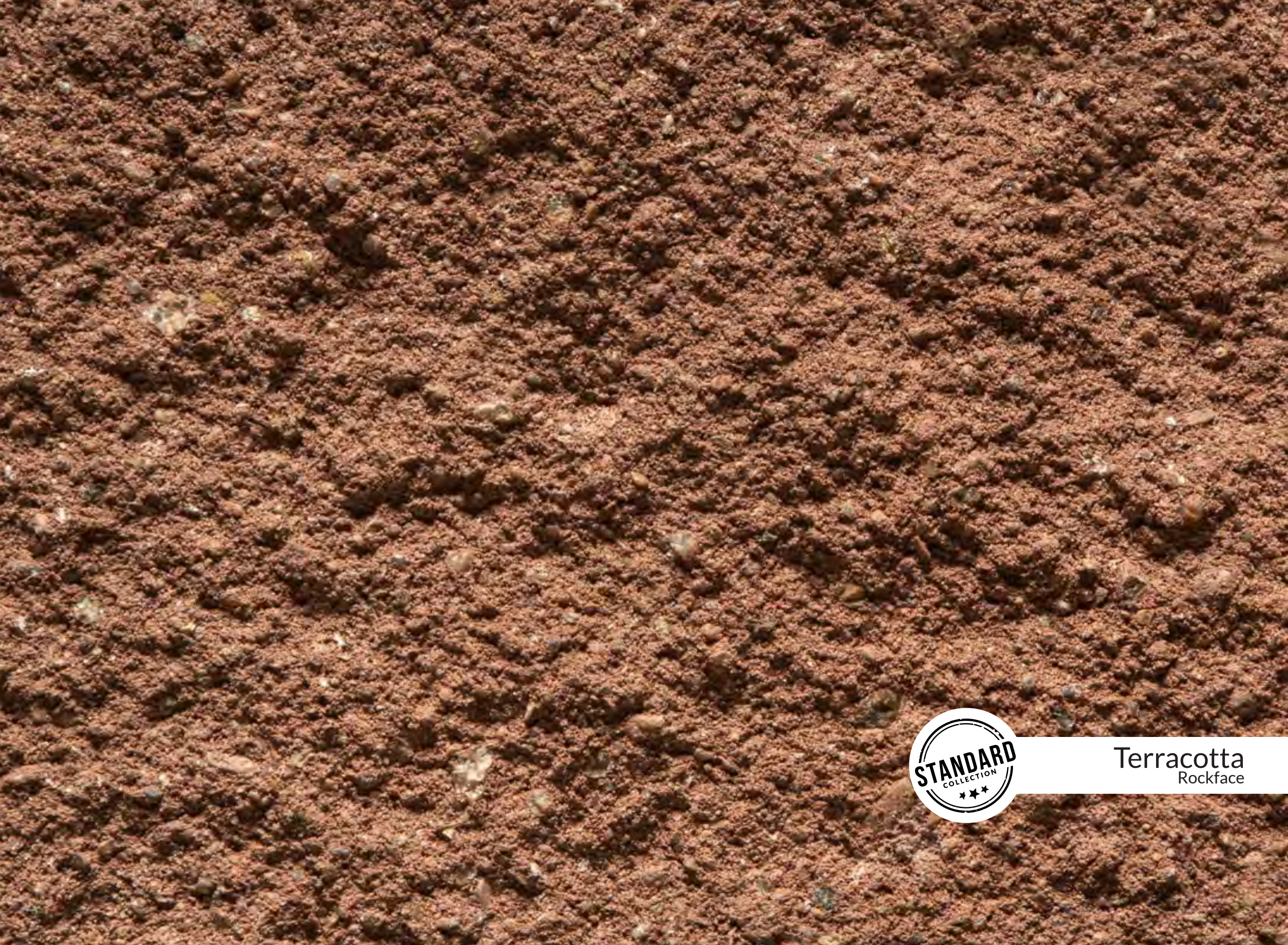
Sand
Smooth



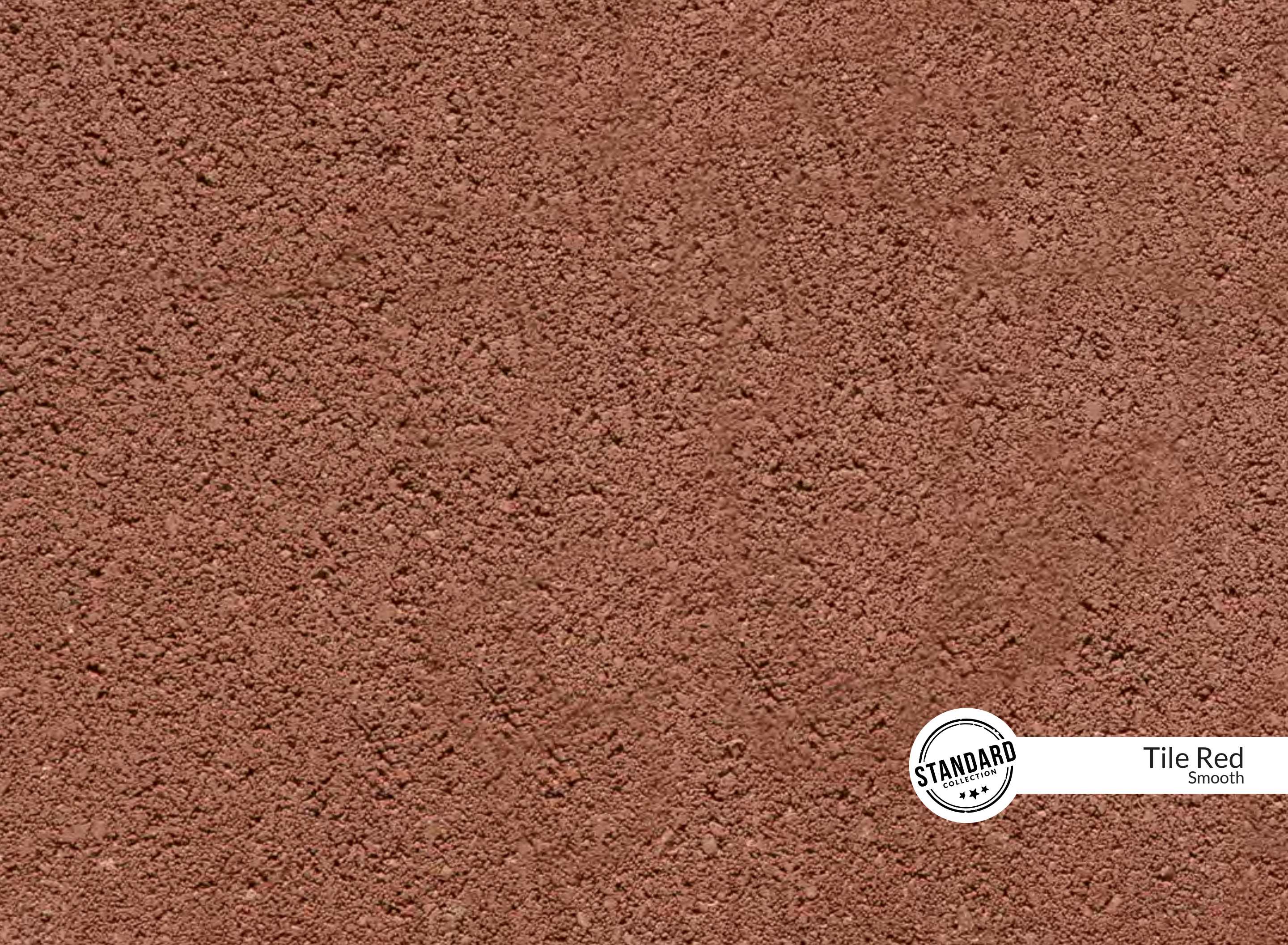
Sand
Rockface



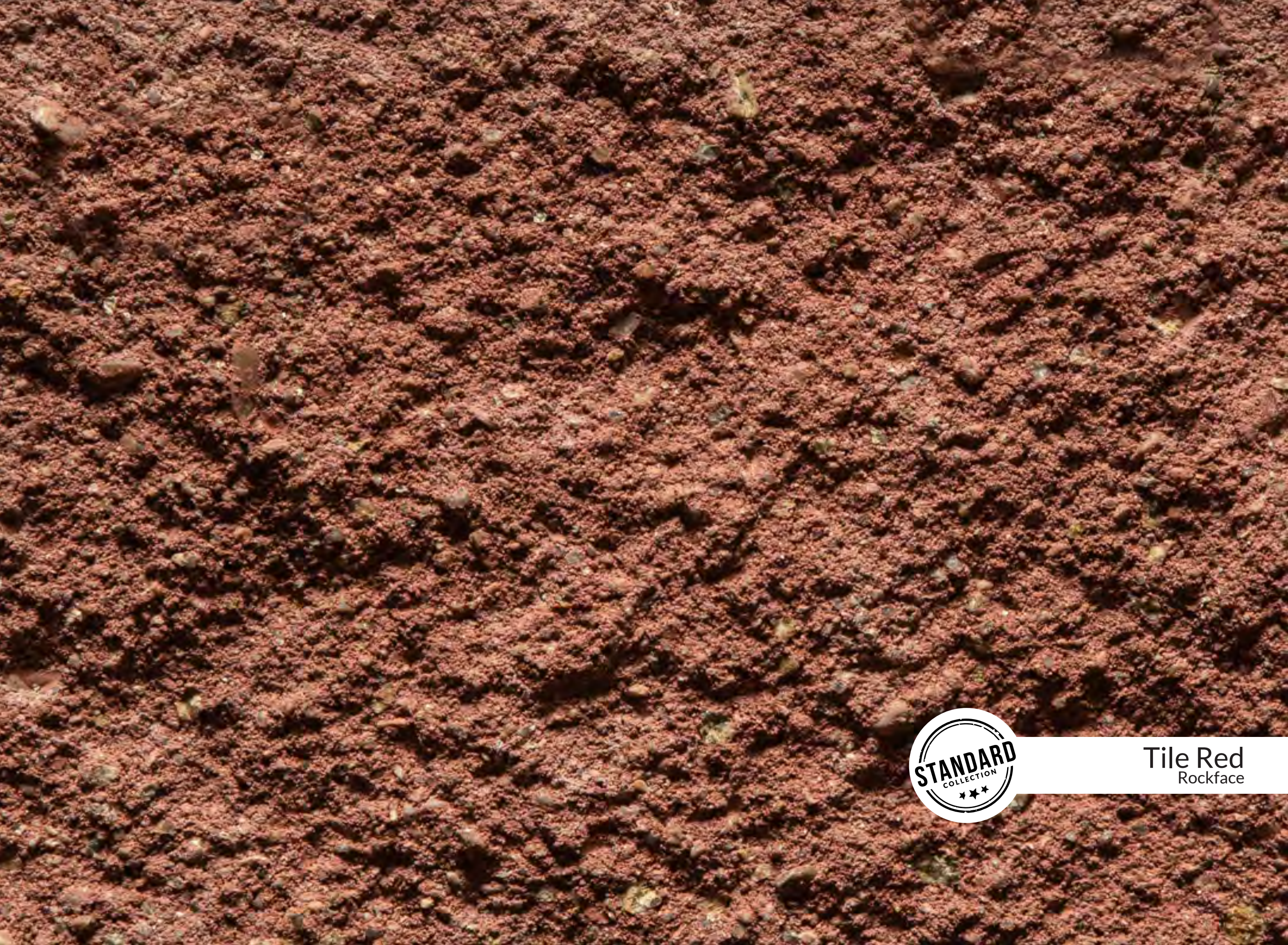
Terracotta
Smooth



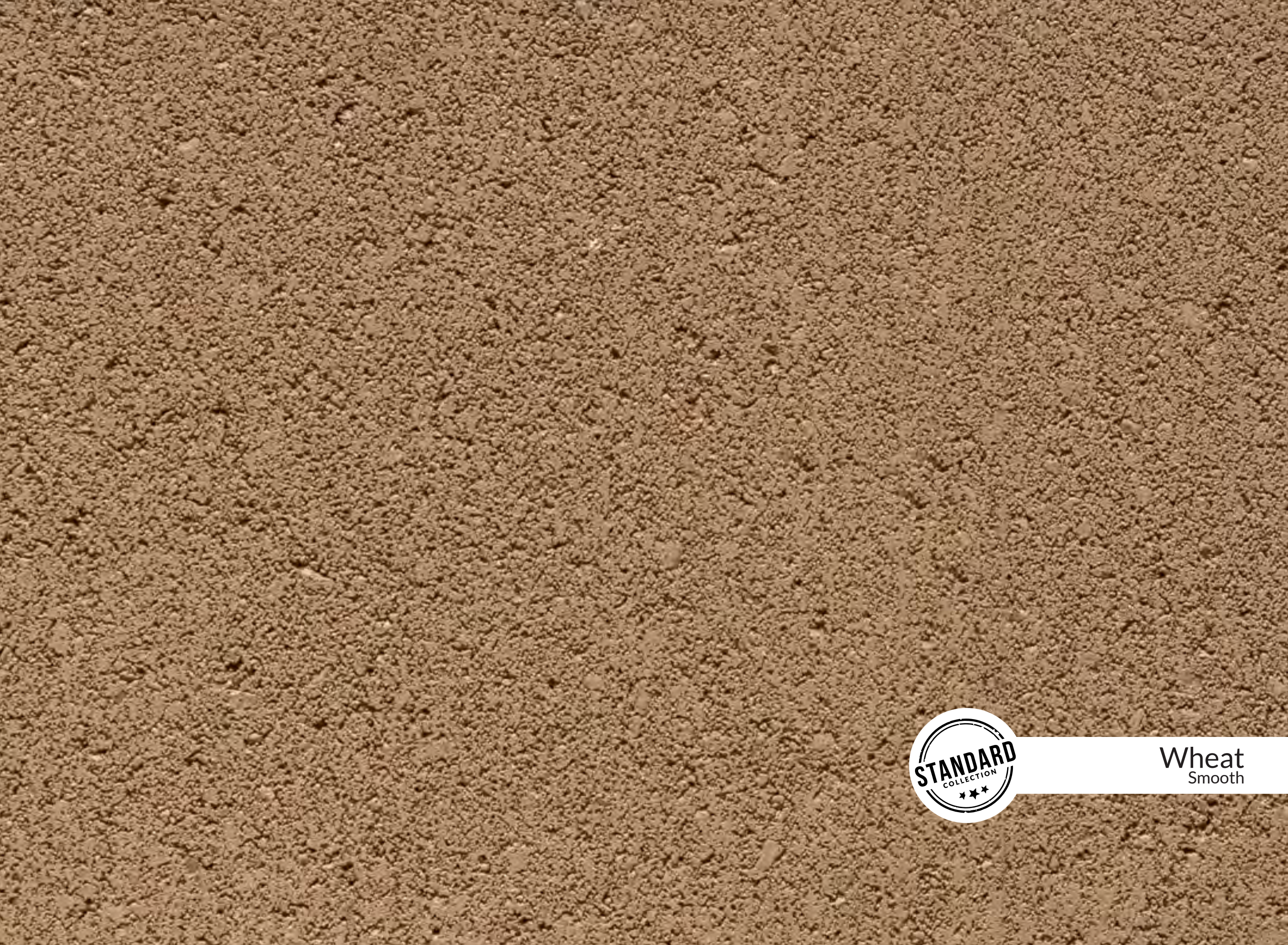
Terracotta
Rockface



Tile Red
Smooth



Tile Red
Rockface



Wheat
Smooth



Wheat
Rockface



Biscotti
Smooth



Biscotti
Rockface



Champagne
Smooth



Champagne
Rockface



Cotton
Smooth



Cotton
Rockface



Cream
Smooth



Cream
Rockface



Linen
Smooth



Linen
Rockface



Pewter
Smooth



Pewter
Rockface



Smoke
Smooth



Smoke
Rockface



Wool
Smooth



Wool
Rockface



Glacier
Rockface



Marble
Rockface



Putty
Rockface

DAYTON FREIGHT



Structural and Smooth Shapes



A Block



Bay Window



Beam Lintel



Concrete Brick



Corbel



Double Bullnose Half



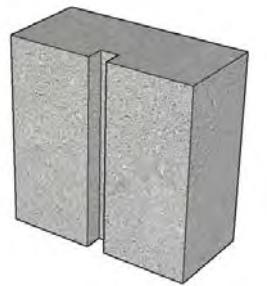
Double Bullnose



Double Corner



L Corner



Quarter



Single Bullnose Half



Single Bullnose

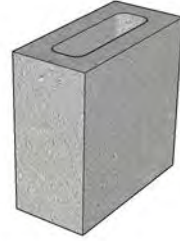


Utility Block

Scored and Rockface Shapes



Bond Cream



Cored Half



Cored Slab



Cored Three Quarter



Half High Cored



Half High Solid



Half



Knock Out Bond Cream



Single Corner



Solid

Scored Block Patterns



Standard



Three Quarter



Double Score Standard



Single Score



Triple Score Standard

FRONT 



Legacy Stone

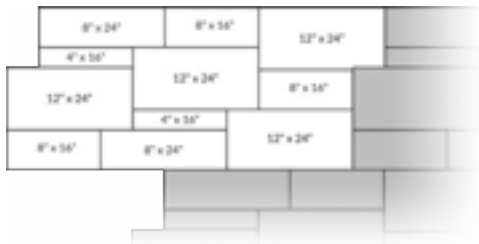
Watkins Concrete Block has developed large-scale architectural veneer units that can achieve a level of design elegance that overshadows the ordinary. Choose from the four example patterns or create your own custom look with new Legacy Stone sizes.

ashlar patterns

pattern 48
7.22 ft²



pattern 12
14.22 ft²

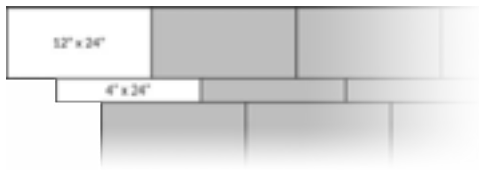


running bond patterns

pattern 84



pattern 24





Watkins Concrete Block
144th & Giles
Omaha, NE 68138
Phone: (402) 896-0900

watkinsconcreteblock.com



Reimers Kaufman Concrete Products
6200 Cornhusker Hwy
Lincoln, NE 68507
Phone: (402) 434-1855

reimerskaufman.com



Christensen Concrete Products
3990 US-30
Grand Island, NE 68803
Phone: (308) 384-7030

christensenconcrete.com



Kearney Crete & Block
2908 US-30
Kearney, NE 68847
Phone: (308) 237-3126

kearneycreteandblock.com

A NEBCO COMPANY